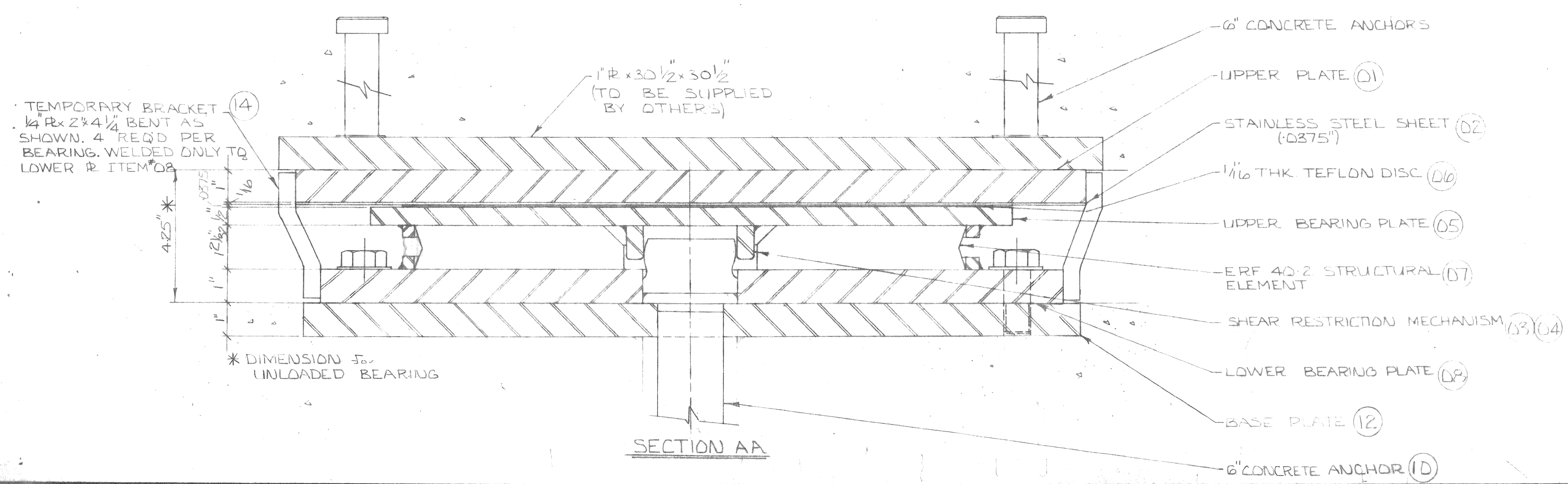


GENERAL NOTES:

1. ALL STEEL FOR BEARING ASSEMBLIES SHALL BE, CSA STD G40.20 GRADE 44W
2. ALL STEEL TO BE PAINTED ONE SHOP COAT OF PRIMER, EXCEPT FACES IN CONTACT WITH CONCRETE
3. ALL WELDING TO CONFORM TO CSA STD W59.1
4. STAINLESS STEEL TO BE TYPE 304 BRIGHT ANNEALED



LEID, CROWTHER & PARTNERS LIMITED
REVIEWED ONLY
 MATERIAL MUST MEET REQUIREMENTS OF SPECIFICATIONS AND DRAWINGS. APPROVAL OF ENGINEER AND OWNER GENERAL CONSTRUCTION FEATURES NOT REPAIRED.
 CORRECTIONS ARE REQUIRED WHERE NOTED IN RED
 Project: Osborne St. Bridge
 Proj. No. 3477 Sit. 4/10 Date FEB 17 1976

WABD-FYFE 400 TON MULTIDIRECTIONAL BEARING
 For PIER #1 & 3 - 8 COMPLETE UNITS REQ'D.

<p>— NOTE — INFORMATION AND KNOWHOW ON THIS DRAWING IS THE PROPERTY OF ELASTOMETAL LIMITED USE OR REPRODUCTIONS OF THIS DRAWING IS PROHIBITED WITHOUT WRITTEN PERMISSION</p>	DWG. NO: E-670-1
	PROJECT: OSBORNE ST. BRIDGE
	ELASTOMETAL LIMITED
	DRAWN BY: EVAN TAYLOR PROJECT #62-71 DATE: JAN 19 76 CHECKED BY: SHEET 1 OF 3 SCALE: N.T.S. WABD-FYFE MULTIDIRECTIONAL 400 TON BRG.

TYPE 'B'